

**ChildFund International
Humanitarian Situation Report Template**

Humanitarian Situation Report [#2]

COVID-19 – Zambia

April 1, 2020

Simba Machingaidze- CD +260 977 173 992

Godwin Nsofu- Partnerships Manager + 260 966748729

April 2020

UPDATED SECTIONS IN BLUE

Part 1: The Overall Situation

COUNTRY: Zambia

Total Number of COVID-19 Cases Reported	Number of Deaths	Number of Cases Recuperated
36	00	00
SOURCE: https://www.arcgis.com/apps/opsdashboard/index.html#/bda7594740fd40299423467b48e9ecf6		

ChildFund-supported areas (Provide only if you have reliable data on this. You can report on a consolidated basis or by program state/region/province/etc. if you have this detail.)

Geographical area (country or state/region/province)	Total Number of COVID19 Cases Reported	Number of Deaths	Number of Cases Recuperated
Lusaka Province	34	00	00
Copperbelt Province	02	00	00
SOURCE: Minster of Health Press Statements and Zambia National Public Health Institute COVID-19 Situational Reports.			

- Any relevant background information about areas affected.
The Zambian government confirmed the outbreak of COVID-19 in Zambia on 18th March 2020 with two confirmed cases. The number escalated to 36 at as on 31st March 2020. 26 of the 36 cases are imported cases concerns returning Zambians who travelled to affected countries while 10 are in-country cross infections concerning people who came into contact with imported cases.
- Host government posture: Have they declared a state of emergency and/or requested outside assistance? Which nationwide measures has the government taken, e.g., limitation on meetings, internal travel, school closures etc.
The Zambian government closed all schools, colleges and Universities as of 20th March 2020. The government also limited the hours of church service to one (1) hour with smaller groups of congregants. All bars, night clubs, cinemas, gyms and casinos have been closed. The government also banned large gatherings such as workshops, weddings and funerals or any event that may pull a large crowd of people above 50. Restaurants are operating on take-away and delivery basis.

- What responses has the government put into place to address the health crisis and/or the economic impact?

The government has established 92 confirmed quarantine centers throughout the country as shown in the table below:

PROVINCE	NUMBER OF ISOLATION FACILITIES SET UP
Eastern	14
Southern	13
Lusaka	6
Muchinga	9
Western	16
Central	12
Copperbelt	10
Northern	12
Luapula	Not Yet Confirmed
North Western	Not yet Confirmed
Total Confirmed	92

The country only has two test centers namely University of Zambia Teaching Hospital and University of Zambia Veterinary School. These two centers are likely to get overwhelmed soon in the face of rapid increasing numbers of COVID-19 suspected cases.

The borders are still open for now. To date the government has argued that closing the borders will negatively impact the economy and the people given that Zambia is a landlocked country.

Response to Economic Impact

- Government has set up an Epidemic Preparedness Fund under the Ministry of Health amounting to K57 million;
- Cabinet has approved a COVID-19 Contingency and Response Plan with a budget of K659 million under the Disaster Management and Mitigation Unit.
- To support the easing of liquidity in the face of the adverse effects of COVID-19, Government will release K2.5 billion to reduce domestic arrears owed to domestic suppliers of goods and services, reduce outstanding arrears to pensioners under Public Service Pension Fund and retirees under Ministry of Justice and reduce outstanding third-party arrears and other employee related commitments. In addition, K140 million will be released to pay local contractors in the road sector.

In order to provide tax relief to businesses, Government will:

- Suspend excise duty on imported ethanol for use in alcohol-based sanitizers and other medicine related activities subject to guidelines to be issued by ZRA
- Remove provisions of SI 90 relating to claim of VAT on imported spare parts, lubricants and stationery to ease pressure on companies;
- Suspend import duties on the importation of concentrates in the mining sector to ease pressure on the sector.
- Suspend export duty on precious metals and crocodile skin.

What travel restrictions has the government put in place for travelers entering the country?

Government has suspended all none-essential foreign travel. Travelers entering the country without symptoms should be quarantined for at least 14 days at their own cost.

The government has also commenced mandatory quarantining of all truck drivers entering Zambia for 14 days before they can continue with their journeys either transiting or in-country.

Part 2: The Situation in Areas Where ChildFund Works

Partner Organization (Use Salesforce identifying code/name.)	# of Enrolled and Sponsored Children		COVID19 Cases Reported in ChildFund Communities (Y/N/Unknown) Provide number if available.	Number of Enrolled Children Reported with COVID19 (If available.)	Number of enrolled children diseased as result of COVID19
	Sponsored	Enrolled			
Chibombo Child Development Agency	2,963	4,472	00	00	00
Chongwe Child Development Agency	3,631	5,922	00	00	00
Kafue Child Development Agency	3,932	5,792	00	00	00
Luangwa Child Development agency	3,486	5,956	00	00	00
Lusaka Child Development Agency	1,488	2,173	YES	00	00
Mumbwa Child Development Agency	3,151	4,533	00	00	00

NOTE

YES: There are reported COVID_19 in Chaisa and Jack Compounds where ChildFund has operations. However, the numbers are not yet known.

Child deaths: List any sponsored child (with Partner organization and child ID from salesforce) diseased as a result of COVID19. (Note: These need to be reported immediately following the regular sponsorship protocols.)

Partner Organization (Use Salesforce identifying code/name.)	What is the status of the program/sponsorship processes (operational/suspended)?					
	Program Implementation	CVS	M&E Level 2	Enrollment /Disaffiliation	Sponsorship Communication	DFC
Chibombo	Operation	Suspended	Suspended	Operational	Operational	Operational
Chongwe	Operation	Suspended	Suspended	Operational	Operational	Operational
Kafue	Operation	Suspended	Suspended	Operational	Operational	Operational
Luangwa	Operation	Suspended	Suspended	Operational	Operational	Operational
Lusaka	Operation	Suspended	Suspended	Operational	Operational	Operational
Mumbwa	Operation	Suspended	Suspended	Operational	Operational	Operational

Note: As a global measure, all sponsor visits have been suspended.

- What issues are children in these areas facing (food shortages, safety concerns, school closure, etc.)?
All schools were closed as of March 20, 2020.

- Child protection risks caused or exacerbated by crisis situation.
- Most children are worried of the risk of contracting COVID 19

Part 3: ChildFund's Response

- i. Who is or will be leading/managing the response?

The CD with support from the COVID 19 Task Force that has been put in place

- ii. Planned, desired or ongoing response – inside or outside current operational areas.

Continued with community sensitizations in all operational areas & putting up of posters and distributing fliers on COVID-19 in local languages. All health centers in our operational areas have been supported with hand washing facilities, soap and hand sanitizers.

- iii. Who are we partnering or collaborating with to provide our response?

National and District level government agencies especially Ministry of Health and Zambia Information Services

- iv. What kind of response activities or interventions are being provided? What support items are needed or have been collected/distributed? How is ChildFund linked with humanitarian coordination structures, i.e., in which clusters or working groups do we participate? The most recent/next meeting and who is representing ChildFund? Donor meetings we have attended, or missions that we are aware of related to the response?

ChildFund is part of the National Education Working Group. The working group is composed of all INGOs and Local NGOs working in the Education sub-sector such as Save The Children, Plan International, World Vision. The platform also includes UN agencies such as UNICEF, WHO, WFP, UNESCO and other agencies such as USAID. These meeting are attended by the Education Technical Manager. The next meeting will be on Wednesday 1st April 2020 and will establish how ready the network provider ZAMTEL is to support access to the education Portal for children to continue learning for the next eight weeks during the time that schools will be closed due to COVID-19.

- v. Next steps

ChildFund is working with its six LPs to support community sensitizations in all the ten operational districts in collaboration with Ministry of Health and Zambia Information Services.

- vi. For sitreps submitted after ChildFund response has been initiated, what is the current progress of implementation vs. the established response plan?

The Ministry of Health has identified Ibex Hill, Chaisa and Jack compound in Lusaka as epicenters for the COVID-19 transmission. ChildFund has operations in Jack and Chaisa compounds. As such, ChildFund is working with Chawama Level 1 hospital that covers Jack compound and Chaisa Health Centre that covers Chaisa compound. The two health facilities have identified face masks, hand sanitizers and soap as their immediate needs. ChildFund will procure these items and donate to the two health facilities in the week beginning 6th April 2020.

Some Pictures



Figure 1: Donating handwashing Facilities and soap to Government



Figure 2: Teaching children on hand washing

that have

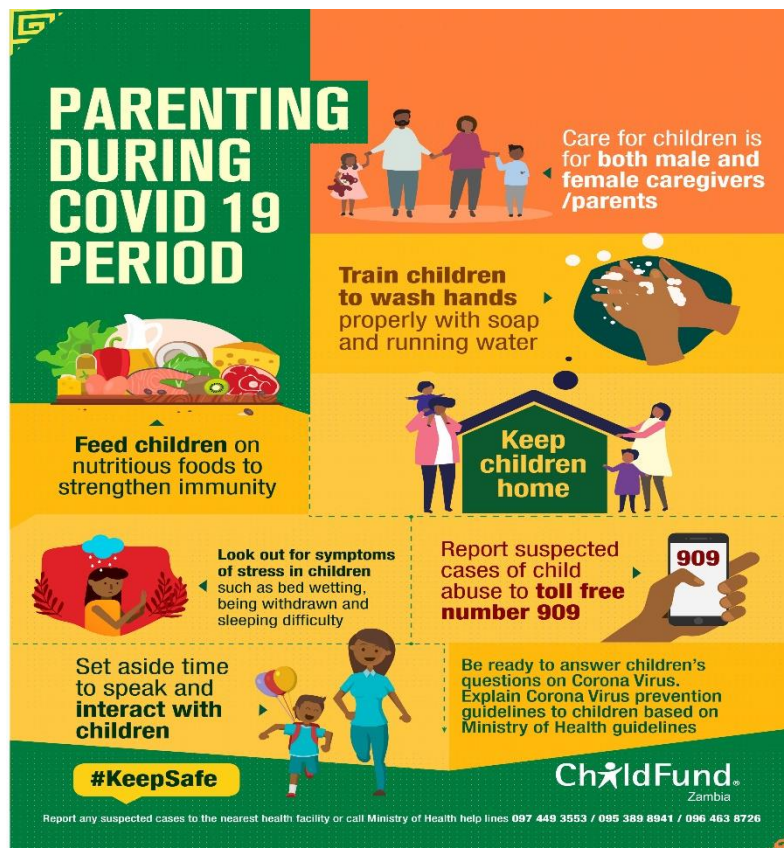


Figure 3: Some posters been distributed to communities

Below Sections for Internal Use Only

Part 4: Office and Staff Status

Office Status (Open/Closed)	Number of Staff:				
	Diagnosed with COVID19	Diseased from COVID19	Working from Office	Working from Home	On Special Leave
Open	00	00	48	01	00

Notes:

- Any cases of staff diseased need to be reported immediately to RD and GHR.
- Special leave as per [COVID19 Administrative Guidelines](#).

Number of staff/partner organization staff completed WHO COVID online training

<https://www.who.int/emergencies/diseases/novel-coronavirus-2019/training/online-training>.

Part 5 Human Resources

- Which visitors are there in the country? Please include names, functions, contact information and arrival/departure dates for both IO and RO staff (note: due to the travel ban, this will apply only once the ban has been lifted)
None.
- Any gaps in staffing/need for deployment from other COs or Global Teams?
None for now.
- Are there any other major HR issues?
None for now

Part 6 Safety & Security

- Are police and other services functioning in the normal manner?
Yes.
- Are the courts still operating?
Yes
- Are there reports of looting or increased criminality?
No
- Have military personal being deployed to patrol towns or cities?
No
- Confirm the safety of staff and their families in the affected area.
All our staff members are safe as of today.
- Have Safety and security risks/mitigation plans been updated to current environment?
Yes.
- Recommendations around any upcoming travel planned for staff or donors (note: Only once global travel ban has been lifted)
No unnecessary field travels. Only travels sanctioned by the Department Lead.

Part 7 Grants

List all active grants:

Grant Job Code	Grant Name	Donor	Status of Implementation (Normal/Reduced/Suspended)	Any specific guidance received from donor? (Yes/No)
12-0383D	Cfger-Cfs3-Zam		Reduced	No
2-0357D	Ire- Kakonge prjct- Zam	Irish embassy	Normal	No
25-040D	Hilton- Multi Co Ecd- Zam	Conrad Hilton Foundation	Suspended	Yes
25-054D	Gcf/Pg-Safe H2O P2- Zam	P & G	Suspended	No
3-0375D	Unicef- Cbiedcd P2- Zam	UNICEF	Suspended	No
99-0243D	Chaz- Ftec- Zam	CHAZ (Church Association of Zambia)	Suspended	No

Government has suspended gatherings until further notice, and some of our grants have activities that require Community gatherings.

Part 8 Funding

Provide information about potential sources of funding, including grant donors, subsidy, Emergency Action Fund, Alliance members, GIK, etc., for these emergency response efforts using the chart below:

Donor	Program	Amount (USD)	Requested? (Y/N)	Confirmed? (Y/N)
<u>CHILDFUND</u>	<u>PEF</u>	<u>\$5,000</u>	<u>Y</u>	<u>Y</u>
<u>CONRALD HILTON</u>	<u>ECD</u>	<u>\$3,000</u>	<u>Y</u>	<u>N</u>
<u>CHILDFUND</u>	<u>SUBSIDY</u>	<u>\$15,000</u>	<u>N</u>	<u>N</u>

- Budget
 - Outline how we will use this funding with a rough topline budget.

The main interventions are being planned around community sensitization materials, printing and distribution of IEC materials, Public address announcements through the Zambia News & Information services.

Other planned activities are to create community response mechanism that will link the affected individuals in the communities to health centers for immediate assistance

Part 9 Media/Communications

- a. List of media who will be or have been contacted with press releases.
 - i. Zambia National Broadcasting Co-operation, Zambia Daily Mail, Times of Zambia, One Love Radio, NGO news.
 - ii. The first Press release has been developed and reviewed by the Country Office COVID task team and should be released to five media houses that have been identified soon. The release highlights our responses to the pandemic that include the stepping up of our efforts in promoting hygiene and sanitation amongst our enrolled children and their families.
- b. List of emergency CO spokespeople, including name, location, contact information, and languages spoken.
 - i. Simba Machingaidze -The Country Director (0977173992)- Lusaka- English
 - ii. Harriet Chewes- Human Resource Manager (0977760715)- Lusaka- English
 - iii. Priscilla Chama- Communications Manager (0977450009) – Lusaka- English
 - iv. Godwin Nsofu-Partnership Portfolio Specialist (0966748729)-Lusaka- English
- c. Plans for collecting photos/videos/stories, e.g., should an outside photographer be hired?
 - i. We are planning to collect these from our LPs that are doing sensitizations as regards the preventive measures. No plan to hire outside photographer. We will take photos internally.
 - ii. Due to restrictions in movements and in order not to put our enrolled children at risk, LP staff have been requested to work with district staff from the Zambia News and Information Services to take short videos and photos during the dissemination of information on hygiene and sanitation. These then will be submitted to the Country Office for reviews and dissemination.
- d. Key points for messaging and visibility, particularly any host-government sensibilities that must be considered.
 - i. For now, Government has produced IEC materials and translated them in different languages for use during the sensitizations. We will reproduce these when the need arises. We will focus on the press releases and other programs on community radio stations. We will follow MOH guidelines on messaging.
 - ii. We are still using IEC materials produced by the Ministry of Health as we were given enough to go round our six local partners.
- e. Support needed or requested from IO, GSS or Global Teams – whether onsite or remote.
 - i. None for now