

Humanitarian Situation Report [1]

[COVID-19] – [Ecuador]

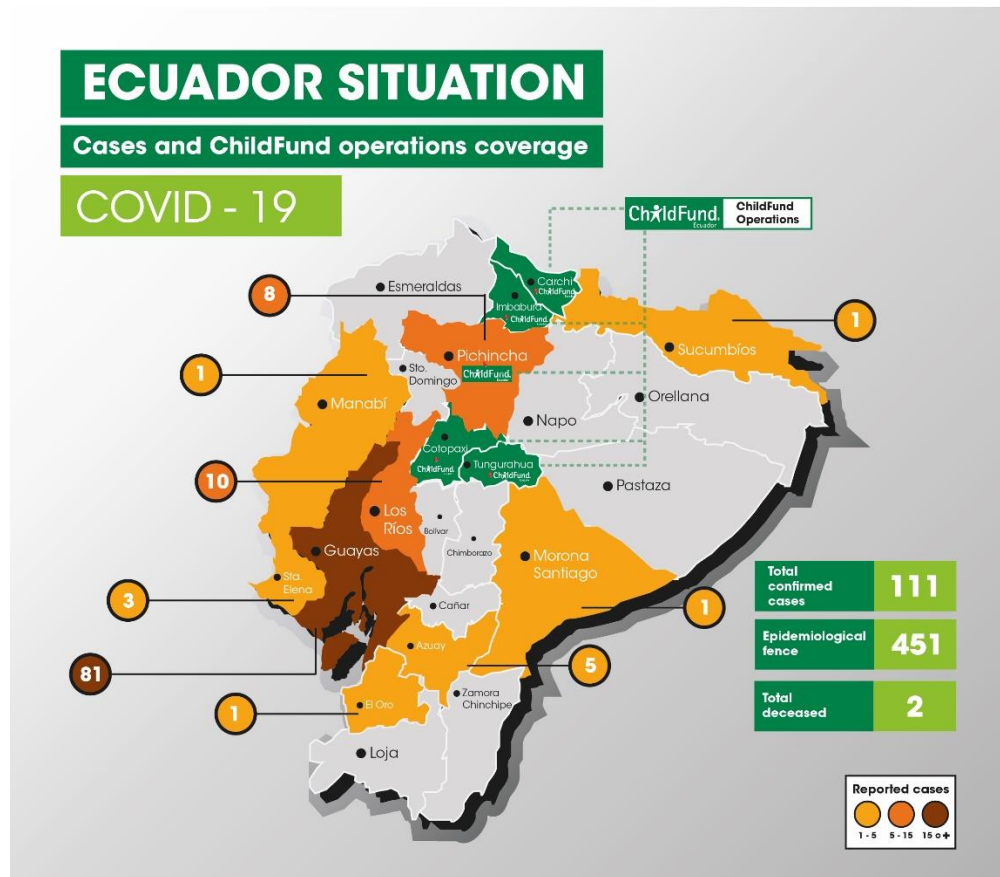
[March 17, 2020]

[Janet Cruz – Country Director / jcruz@childfund.org (593) 90678913]

[March 17, 2020- March 18, 2020]

Part 1: The Overall Situation

Areas of impact:



Casos identificados por grupo de edad y sexo Covid-19, Ecuador

Grupo edad	Confirmado	
	Femenino	Masculino
De 0 a 11 meses	1	0
De 1 a 4 años	0	3
De 5 a 9 años	0	3
De 10 a 14 años	0	1
De 15 a 19 años	3	0
De 20 a 49 años	22	38
De 50 a 64 años	10	9
Más de 65	13	7

Fuente: SIVE-Alerta DNVE
Datos sujetos a cambios

Measures taken by government:

Ecuador National Government has designed a strategy to avoid community transmission that included among others the following actions:

- Mandatory quarantine and restrictions on internal and external mobility including border closure
- Public services closure except health, safety and risk services
- Face to Face working hours suspension except health, agriculture, livestock and animal care industry
- Trade suspension except businesses to acquire food, medicine, animal feed, financial services, exportations and telecommunications
- Restaurant and coffee shops are suspended, except for home deliveries.
- Ecuadorian Government ask the Humanitarian Country Team to activate.

Part 2: The Situation in Areas Where ChildFund Works

Programs:

Beginning March 16th all LPs have suspended 100% of program activities due to mobility restrictions and controls by local authorities. Local Partners' Staff is working remote.

The National Government ordered the suspension of classes in the schools and the opening of digital platforms. School remains closed.

Child protection risks

Affecting the Right to Education. several children and adolescents are not familiar with those platforms. Online education has not been a topic of work in schools.

Internet risks: Linked to the previous topic, in the absence of digital education, girls, boys and adolescents are exposed to inappropriate messages in the use of social networks.

Affecting the Right to Health: the elderly population or adults with pre-existing diseases are considered a high-risk group. However, children and adolescents living in conditions of poverty and extreme poverty and who are malnourished may be populations at high risk for the coronavirus.

Child labor: Girls, boys and adolescents are at risk of being exposed to high levels of child labor in their families in the absence of access to educational regulatory processes or the proper use of free time. Reducing the economic activity of families can increase this risk.

Unlike other emergency contexts, in the current scenario there is a risk of having insufficient data to provide specific support. Prevention messages, local coordination with health authorities can contribute to timely assistance that saves the lives of children and adolescents.

Part 3: ChildFund's Response

- CO has activated the DRR Team effective March 16.

- On March 17, Humanitarian Country Team activated education, health, shelter and Wash clusters. **ChildFund Ecuador will participate actively in the education and health clusters and GBV and child protection.**
- The Ministry of Education launched a web site with digital resources for students and ask support to the International Cooperation in order to create content for TV and radio broadcast. ChildFund will work with the Education Cluster to support content development and communication materials.
- CO contacted to Ministry of Health who explained they are drafting a communication to send to International NGOs asking for support with specific supplies.
- Local partners in coordination with CO are designing messages to publish it on social networks. The messages will be related with Protocols for prevention of COVID-19; good use of free time; use the internet safely; to provide didactic resources.
- Each LP will find out the initiatives of the local authorities in their territories to analyze support possibilities in coordination with CO
- LP in Imbabura is supporting to Health District to print informative banners with protocols to prevent COVID-19 contagion, these banners will be used by health workers to sensitize the population
- LP in Carchi will provide to three communities soap in coordination with the local authorities
- A pilot to use a virtual classroom with programs model contents is being implemented and will be evaluate to scale.

Below Sections for Internal Use Only

1. Staffing and Security

Due to governmental decree, in force since Tuesday 17th, all public and private workers are implementing remote work. Field visits are banned. All staff is working from home and there are no reported cases of COVID19 among the staff. In order to ensure the continuity of operations and reduce the impact of the emergency, people have adequate equipment and TI ensured the access to their information remotely. CO staff was provided with unlimited cellphone plans including internet access.

Psychological support for handle stress due to forced quarantine will be developed. Meanwhile a “virtual cafeteria” has been organized in daily bases, so Staff can connect virtually to socialize.

2. Sponsorship and Grants

2.1. Sponsorship

All the sponsorship processes are on standby due to mobility restrictions and lack of transportation services, courier services not available nationally.

The details of the correspondence that is going to be affected for the following 3 weeks is the following:

Letter	Active - pending
Child Reply Letter	111
Child Welcome Letter	37
Sponsor's Letter	15
Total	163

The total active letters for the next 90 days are the following:

Letter	Active - pending
Child Bonding Letter	17
Child Reply Letter	504
Child Welcome Letter	37
Sponsor's Letter	15
Thank You Letter	568
Grand Total	1141

For **DFCs** only 60% can be delivered through electronic payment, the 40% won't be delivered because a check needs to be given to the family and we won't be able to have a Thank you Letter.

Special requests are going to have a considerable delay too.

CPR, New enrollments, RAM, and Sponsors Letters are on standby.

No sponsored children are currently ill. **Information on individual children's or family members' infection status is confidential and for security reasons, local partners will not be able to ask or share.**

2.2 Grants

ProFuturo program financed by Telefónica Ecuador Foundation is being impacted, some activities are being rescheduled, for activities related with training, virtual tools are being used

Donors

Potential sources of funding for emergency response efforts

Donor	Program	Amount (USD)	Requested? (Y/N)	Confirmed? (Y/N)
Unicef	Education	<u>TBD</u>	<u>N</u>	<u>N</u>

- **Budget**

3. Media/Communications

Ecuador country office has not created a press release for media. Plan for collecting photos, videos or stories is not possible because of mobility restrictions.

Messages about COVID-19 prevention are being posted in social media.

Spokesperson for national office is Janet Cruz – Country Director / jcruz@childfund.org (593) 90678913

In her absence Daniela Naranjo - Advocacy and Communication specialist / dnaranjo@childfund.org (593) 984620882

4. Support needed or requested from IO, GSS or Global Teams – whether onsite or remote.

4.1 Sponsorship

- Special requests are going to have a considerable delay so changes on standards should be considered.
- Guidelines about communication to sponsors informing the situation and that we are placing a hold on letter delivery from/to the sponsored children in order to protect the health and wellbeing of the kids, families, and communities we serve

- Authorization to prepare a generic response to sponsors for TYL, welcome and reply letters in order to respond to the request and once the situation goes normal, we plan to start a spontaneous letter for these cases.
- Guidelines to respond to possible non-deliveries of DFCs and TYL.